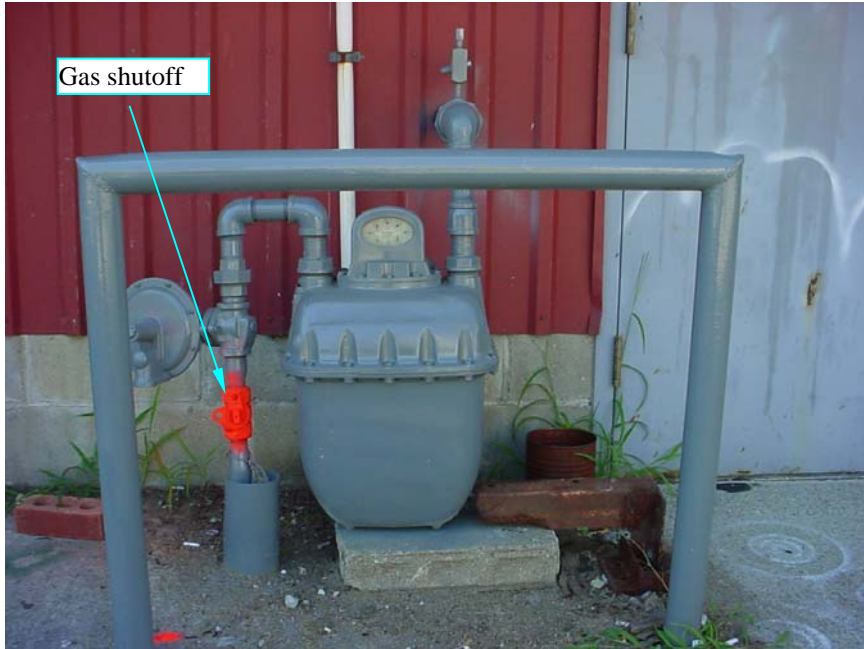
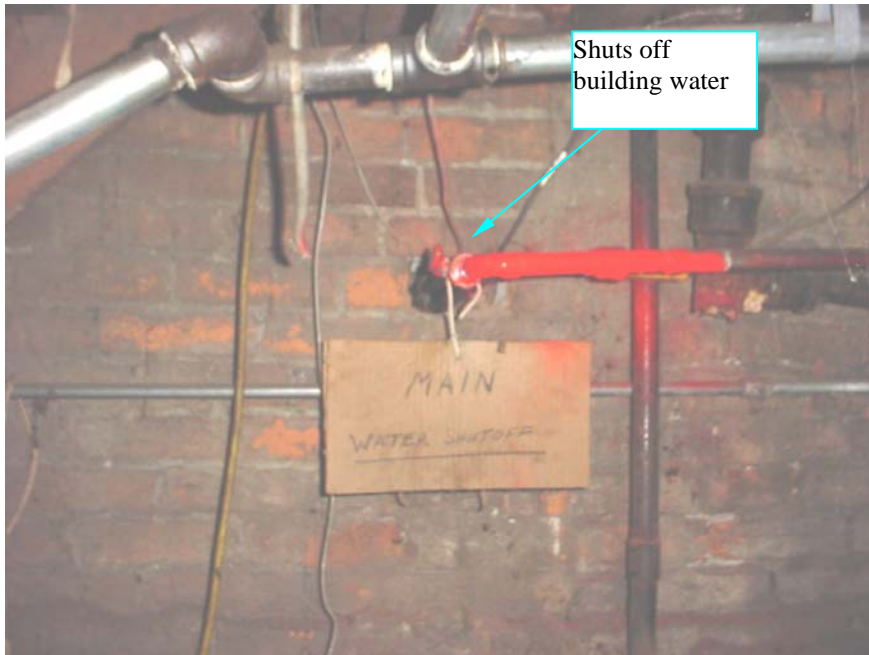


	<p>TITLE: VANITY THEATER EMERGENCY SHUTOFF LOCATIONS</p>	<p>STATUS: FINAL</p>	<p>PAGE: 1 OF 4</p>
		<p>ISSUE DATE: 07/26/05</p>	
	<p>REVISION #: ORIGINAL</p>	<p>REV. ISSUE DATE:</p>	



Outside gas shutoff location (Southeast corner of building - outside Alley Entrance)



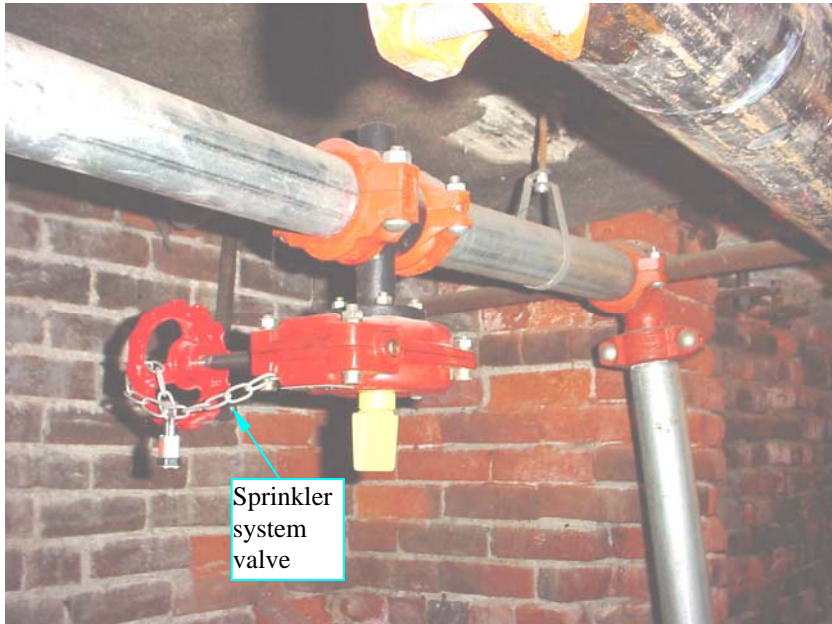
Building Water Shut-off Located in Lobby Basement

	<p>TITLE: VANITY THEATER EMERGENCY SHUTOFF LOCATIONS</p>	<p>STATUS: FINAL</p>	<p>PAGE: 2 OF 4</p>
		<p>ISSUE DATE: 07/26/05</p>	
	<p>REVISION #: ORIGINAL</p>	<p>REV. ISSUE DATE:</p>	




Sprinkler system valve

Sprinkler water Shut-off Located in Lobby Basement



Sprinkler system valve

Sprinkler Water Shut-off Located in Lobby Basement


	<b>TITLE:</b> VANITY THEATER EMERGENCY SHUTOFF LOCATIONS	<b>STATUS:</b> FINAL	<b>PAGE:</b> 3 OF 4
		<b>ISSUE DATE:</b> 07/26/05	
<b>REVISION #:</b> ORIGINAL		<b>REV. ISSUE DATE:</b>	



Sprinkler Water Shut-off Located in Lobby Basement



Main power disconnect location (east side of building -alley entrance)

	TITLE: VANITY THEATER EMERGENCY SHUTOFF LOCATIONS	STATUS: FINAL	PAGE: 4 OF 4
		ISSUE DATE: 07/26/05	
	REVISION #: ORIGINAL	REV. ISSUE DATE:	

DOCUMENT CONTROL INFORMATION

APPROVAL AUTHORITY

WRITTEN BY	APPROVED BY	APPROVAL SIGNATURE	DATE
Cicela	Cicela	Cicela	07/27/2005

REVISION HISTORY

REV #	REV DATE	REVISED BY	CHANGES

--