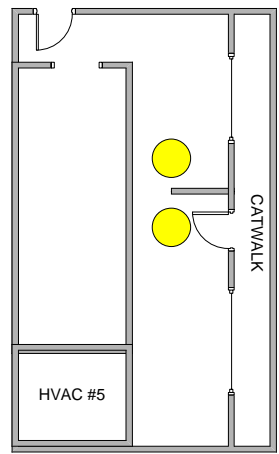


FIRST FLOOR

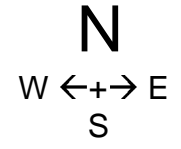


LIGHT AND SOUND BOOTH

- FIRE PULL STATION
- ▲ EXIT LIGHT
- ⬠ EMERGENCY LIGHT
- FIRE EXTINGUISHER

VANITY THEATER BUILDING PLAN
 122 S. WASHINGTON STREET
 CRAWFORDSVILLE, IN 47933

NOT TO SCALE



SECOND FLOOR

